

PIPELINE DATA INTEGRATOR

SEAMLESSLY SEARCH THOMSON REUTERS CONTENT ALONGSIDE
THIRD PARTY DATA



WHAT YOU CAN SEARCH

- Thomson Reuters: *IDdb/Thomson Pharma*®
- IMS Health: R&D Focus
- Adis R&D Insight®

WHAT YOU CAN DO

- Undertake powerful, cross-database searches
- View the results as a consolidated output
- Compare and contrast the information
- Link directly to the full record source data
- Export in a variety of formats
- Keep up to date with changes made to reports via alerts

THE FIRST TRULY INTEGRATED, INDEX-MAPPED PIPELINE DATABASE SUITE

Pipeline Data Integrator is suitable for customers who subscribe to Thomson Reuters R&D pipeline intelligence data (*IDdb* or *Thomson Pharma*) alongside R&D Focus from IMS Health and Adis R&D Insight.

It combines these key pipeline databases into a single, uniformly-indexed and seamlessly searchable knowledge solution. This means you no longer need to go through the tedious process of searching each database individually, combining the results and manually de-duplicating records.

Created and mapped by our industry-experienced editorial teams, the consolidated indexing scheme of *Pipeline Data Integrator* means you can perform a single, comprehensive search that covers all available sources — tripling your searching power and dramatically improving efficiency.

More accurate and reliable than a federated keyword search, it uniquely relies on intellectually-mapped consolidated index terms with cross-database synonym matching, ensuring complete results.

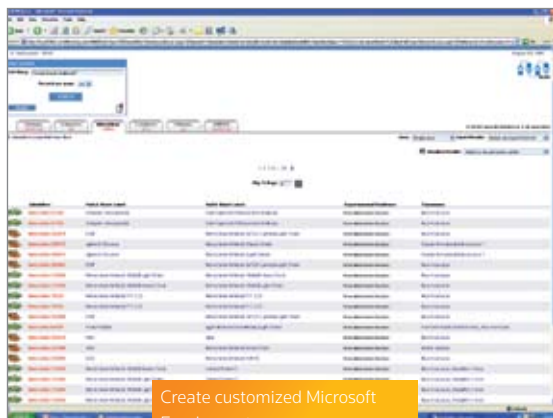
You can view results as a consolidated report, compare and contrast information, save your reports, annotate them, share them with your colleagues, and export them in a variety of formats including Microsoft® Word, BizInt and Microsoft Excel — matching *Pipeline Data Integrator* exactly to the needs of your project.

MULTIPLE SEARCH OPTIONS

There are a number of search types you can run:

- **Quick search:** Run on drug names, or anywhere in the drug record
- **Guided search:** Quick and simple Boolean searching
- **Advanced search:** Combine different types of indexing terms, creating complex searches for precise retrieval
- **Term browser:** Browse all databases by action, technology, indication or EphMRA and uncover all associated information with exclusive mapped terms

You can narrow your search to specific data sources. It is possible to save searches and set up email alerts, automatically adding new matching records from any of the source databases, on all searches run in *Pipeline Data Integrator*.



AUTOMATIC UPDATES, CHANGE REPORTING AND ALERTS

To ensure that your teams are always working with the latest available data, *Pipeline Data Integrator* is automatically updated, daily for Thomson Reuters data and weekly for Adis and IMS data.

You can run reports that show the individual changes in each database. You can also set up daily or weekly email alerts on your integrated searches to keep up to date with changes, regardless of the data source.

You can set your own preferences, including how many results you view at a time and the type of email updates you receive. The 'watch list' facility enables you to save reports for quick and easy access later.

You can create your own customized exports, selecting what you want to export on a field-by-field basis and how you want it to be displayed. You can then save this as a template that you can reuse as necessary. You can even create a template that can be accessed by all users.

You can control annotation sharing to ensure that only allocated user groups can view certain annotations.

Scientific Head Offices**Americas**

Philadelphia +1 800 336 4474
+1 215 386 0100

Europe, Middle East and Africa

London +44 20 7433 4000

Asia Pacific

Singapore +65 6411 6888
Tokyo +81 3 5218 6500

For a complete office list visit:

scientific.thomsonreuters.com/contact

GET A QUOTATION

Contact us today to request a no obligation quotation or visit scientific.thomsonreuters.com

