

ONESOURCE APTOS EXTRACT CLIENT

INSTALLATION AND CONFIGURATION GUIDE

Document Version 2

2018 Thomson Reuters/ONESOURCE. All Rights All Rights Reserved. Proprietary and confidential information of Thomson Reuters. Disclosure, use, or reproduction without the written authorization of Thomson Reuters is prohibited. In compliance with the license agreements for the Open Source Libraries leveraged by Thomson Reuters, our customers can obtain copies of these libraries by contacting Customer Support at <https://tax.thomsonreuters.com/support/onesource/customer-center/>.

DOCUMENT HISTORY

VERSION NUMBER	VERSION DATE	SUMMARY
1	04/01/2018	Initial release
2	7/17/2018	Minor edits including an additional property for the application.properties file.

TABLE OF CONTENTS

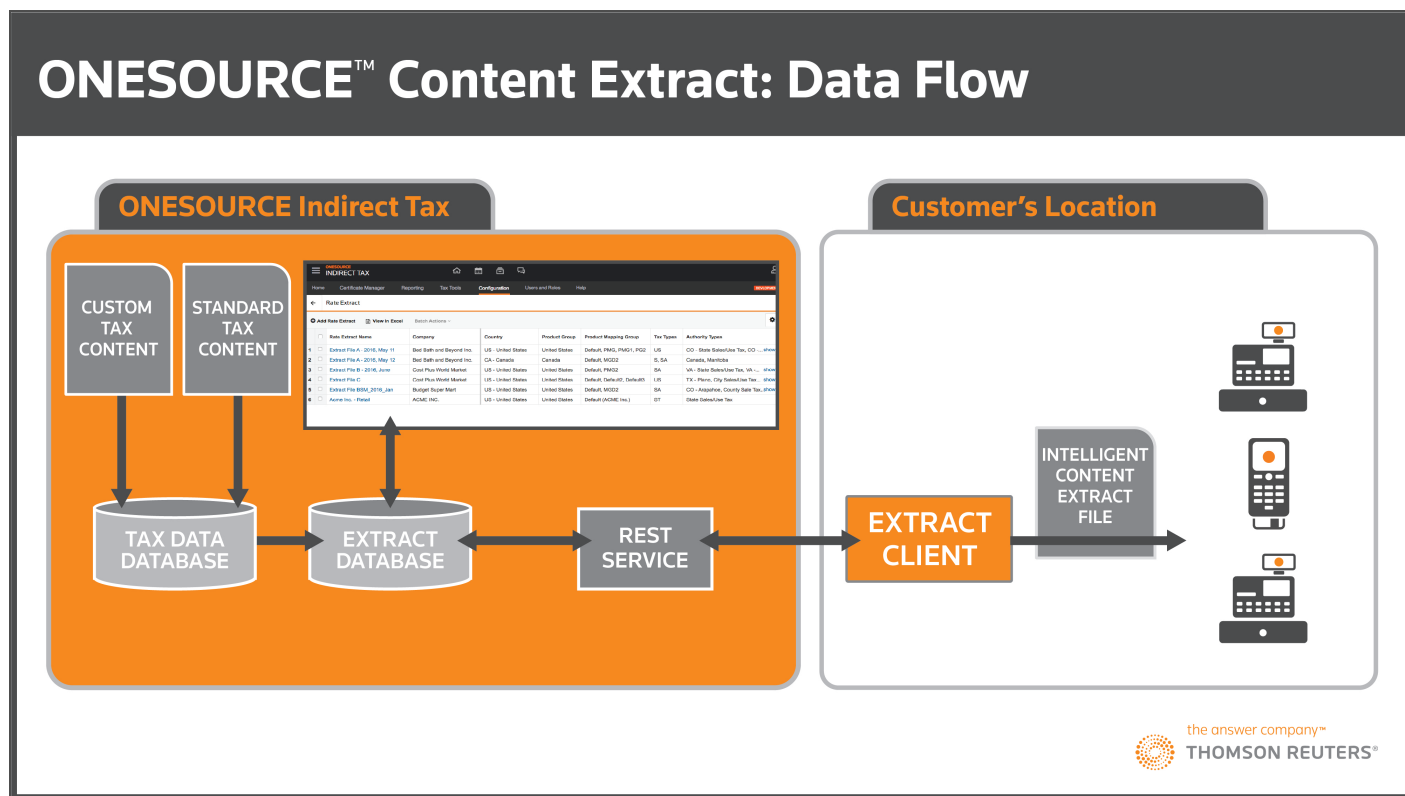
Introduction	1
Architecture	1
Aptos Table Structure	2
DataConnect Files	2
Style Conventions	4
Prerequisites	7
Review System Requirements	7
Indirect Tax Configuration Requirements for Aptos	7
Configure Your Extract Definition	7
Download the Software	8
Install the Aptos Extract Client	9
Run the Aptos Extract Client	11
Log Files and Errors	11

INTRODUCTION

ONESOURCE Indirect Tax Aptos Extract Client calls the ONESOURCE Indirect Tax Content Extract service and prepares the data for import into your environment. This guide explains how to install the client software and connect to the Content Extract service.

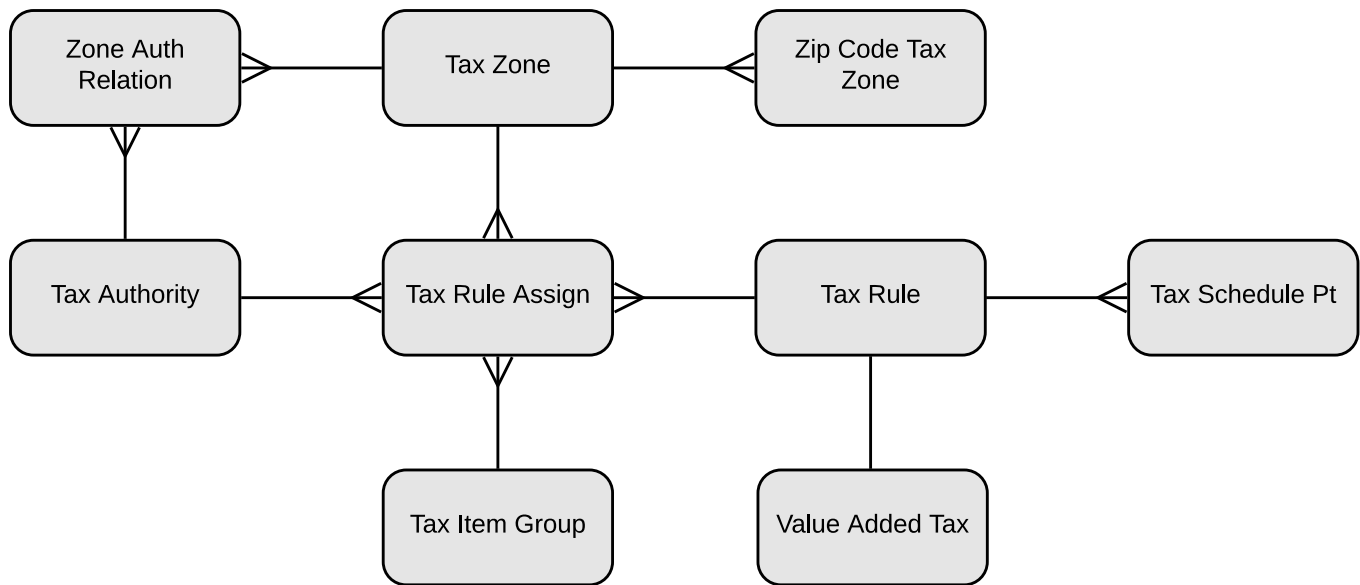
ARCHITECTURE

The Aptos Extract Client is a lightweight Java application used to generate tax treatment files for Aptos. You install the client in your environment, and use it to call the ONESOURCE Indirect Tax Content Extract REST service (ContentExtract). The client prepares the data received from ContentExtract for import into your Sales Audit system as one or more DataConnect (.dcn) files.



Aptos Table Structure

The following diagram shows the relationship between various Aptos tables related to tax treatment that are updated by the .dcn files generated from Aptos Extract Client.



DataConnect Files

Each time you run the Aptos Extract Client, you will get one or more .dcn files. One primary file containing all currently effective tax treatment updates and then one file for each future date in which one or more tax treatments becomes active. The .dcn files contain tax treatment information organized by distinct modules matching the database tables in Aptos. These tables are updated using one of three possible operators:

- Delete
- DeleteAll
- AddUpdate

The .dcn files generated by Aptos Extract Client are named using the following syntax:

- For the primary .dcn file, the file name includes the content version number, the UNIX epoch date, and the file extension .dcn.

For example, *019700101.dcn* for the initial extract or *2419700101.dcn* for an extract including updates up to content version 24.

- For .dcn files with future effective dates, the file name includes the content version number, the effective start date for the included updates, and the file extension .dcn.

For example, *2420200101.dcn* for an extract including updates up to content version 24 that become effective on January 01, 2020.

For more information about Aptos DataConnect, the Aptos database table structure, or the supported operators, refer to *Store 6.4.0 DataConnectTechnicalReference.pdf* which you can get from Aptos.

STYLE CONVENTIONS

We use the following special formatting throughout this guide:

Bold text indicates most user interface elements, such as:

- Data you are expected to enter, such as in a text field
- Pages, buttons, tabs, and field names
- Dialog boxes, drop-down lists, selections within lists, and check box titles
- Windows
- Menu items

Italic text indicates the following:

- File and folder names
- Java classes, PL/SQL objects and executable files
- Document titles

CAPITAL text indicates keyboard commands, such as ENTER, or database components.

`Courier` text indicates command-line input/output.

<brackets> indicate user entry. For example, <host> indicates you should replace the text and angle brackets with your server name.

Book titles are shown in italics and sections within a book are in quotation marks, such as “Starting the Installation” in the *ONESOURCE Indirect Tax Aptos Extract Client Installation Guide*.



This pencil symbol indicates suggestions or additional information.



This warning symbol indicates important text that you should review before proceeding.


☐ This carriage return symbol indicates that a single line of code is divided into multiple lines so you can read it. If you copy and paste code with these symbols, be sure to keep the code before and after the carriage return on the same line.

```
1  /* Code snippets have numbered lines with a gray background.  
   */  
2  /* Be cautious if you copy lines from the code snippets-t  
   he line numbers are included! */
```


PREREQUISITES

Complete the following tasks before you install Aptos Extract Client.

Review System Requirements	7
Indirect Tax Configuration Requirements for Aptos	7
Configure Your Extract Definition	7
Download the Software	8



You must configure the ONESOURCE Indirect Tax companies you want to run extracts for before you can generate a valid extract.

Review System Requirements

Any host on which you install Aptos Extract Client must meet the following requirements:

- Internet access
- Java 8 installed (JRE/Java Runtime Environment)

Indirect Tax Configuration Requirements for Aptos

The following are requirements for configuring ONESOURCE Indirect Tax to work with the Aptos Extract Client.

- Locations must match your Aptos store names, using only numbers.
- The **Grouping Rule** in your extract definition must be set to either **Authority Type** or **Tax Type**.

Configure Your Extract Definition

You must configure one or more extract definitions before using the Aptos Extract Client to generate an extract. To create and manage extract definitions, log on to ONESOURCE Indirect Tax, and then select **Tools > Tax Tools > Extract**. For information on creating and managing extract definitions, refer to the topic "Content Extract Configuration" in Indirect Tax Help.

Download the Software



To download and install the software, get the *aptos-client-extract-1.0.0.0.zip* file from the Indirect Tax Customer Center:


1. Open the Indirect Tax Customer Center at <https://customercenter.sabrix.com/>.
2. Log on using the username and password provided by Customer Support.
3. Find Aptos Extract Client in the **Available Products** list, and verify that **Installed Version** is set to **None**.
4. Select **Download** for Aptos Extract Client.
5. Save the file.
6. Unzip the *aptos-client-extract-1.0.0.0.zip* file.

INSTALL THE APTOS EXTRACT CLIENT

Complete the following steps on each system where you will run the Aptos Extract Client.

1. Create a folder named *onesource-aptos-extract-client*.
2. Complete the following steps for each extract you want to generate from this system:
 - a. Inside the *onesource-aptos-extract-client* folder, create a folder to use for this extract.
 - b. Unzip the contents of the *aptos-client-extract-1.0.0.0.zip* file from [Download the Software \(page 8\)](#) into the folder for your extract.
 - c. Open the file *application.properties* in a text editor.
 - d. Using the table below as a guide, replace the values inside the quotation marks with the values for your extract.

PROPERTY NAME	DESCRIPTION
rest.baseurl	The URL to the content extract service.  Get this information from Professional Services.
client.username	The username for authenticating the Aptos Extract Client to ONESOURCE.  Get this information from Professional Services.

PROPERTY NAME	DESCRIPTION
client.password	The password for authenticating the Aptos Extract Client to ONESOURCE.  Get this information from Professional Services.
client.extractName	The name of the extract configured in ONESOURCE for this instance of the Aptos Extract Client.
client.company	The name of the ONESOURCE company containing the extract for this instance of the Aptos Extract Client.
loadMethod	The method in which you will load content into your system. Options are FULL to load the entire data set every time or UPDATE to load only incremental updates since your previous extract.
data.directory	The directory where the Aptos Extract Client places .dcn files. If the directory doesn't exist, the Aptos Extract Client creates it automatically.

- e. Save and close *application.properties*.

RUN THE APTOS EXTRACT CLIENT

After you install the Aptos Extract Client, complete the following steps to launch the client and generate an extract.

1. Open a command-line console
2. Change the working directory to the folder containing the client and configuration files for the extract you want to run.
3. Execute *aptos-extract-client.jar*.

When the extract is complete, your console will return to a ready prompt. Your working directory now contains one or more .dcn files.

 You may also notice a *mappingcodes* folder, which you can ignore.

LOG FILES AND ERRORS

Each time you run generate an extract, the log file in your working directory is updated. The following table describes errors you may see in this log file.

ERROR MESSAGE	NOTES
Multiple tax types in treatments returned when a single tax type is expected.	Aptos can only manage a single type of tax on a transaction. The system will return this message if multiple tax types are detected. In ONESOURCE Indirect Tax, correct your extract definition by selecting only one tax type.
Store name not a numeric value.	Your locations in ONESOURCE Indirect Tax must match your Aptos locations, which must be numeric values. In ONESOURCE Indirect Tax, update your location names using only numbers to match Aptos.
The grouping rule for the associated extract configuration is: AUTHORITY. The grouping rule must be TAX_TYPE or AUTHORITY_TYPE.	Your extract definition must be configured to use the Tax Type or Authority Type grouping rule to work with Aptos. In ONESOURCE Indirect Tax, correct your extract definition settings.